



MARIN COUNTY
OFFICE OF EDUCATION

ANNUAL REPORT

2023-2024



Table of Contents

03

Purpose and
Function

04

Superintendent's
Message

07

Board of
Education

16

Diversity and
Belonging

19

Department
Updates

46

Countywide
Wellness WORK

49

Grant Highlights

52

Contact Us



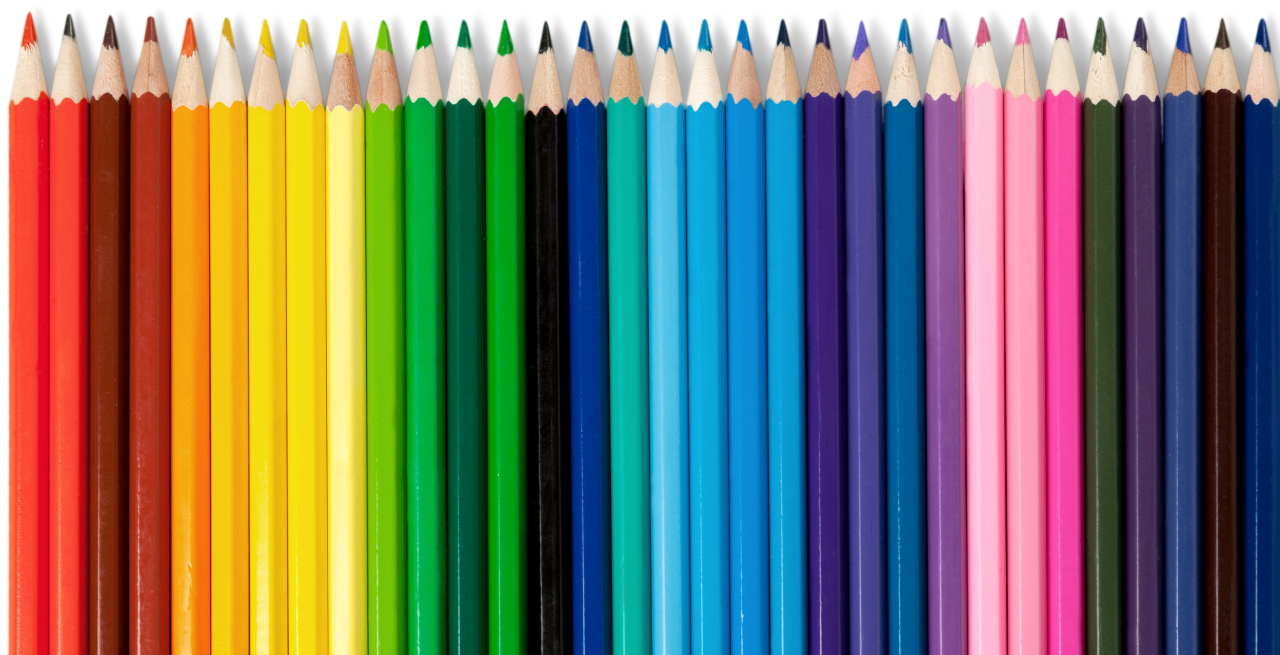
County Offices of Education: Purpose and Function

A county office of education is a collective term that generally refers to the roles and responsibilities of two separate and independent agencies: the County Board of Education and the County Superintendent of Schools. County offices of education are considered to be agencies of the State of California that provide support and oversight to independent school districts located within a county. They operate under the authority of California Education Code and act as intermediaries between the California Department of Education and local and independent school districts. County offices of education work to provide various educational services and resources to schools, teachers, administrators, and students. In Marin County, the Office of Education provides:

- **Fiscal Oversight:** Providing support to school districts to ensure compliance with established fiscal regulations and monitoring and approving school district budgets.
- **Local Control and Accountability Plan (LCAP) Approval:** Ensuring school districts set goals, plan actions, and leverage resources to meet the identified goals designed to improve student outcomes.
- **Professional Development:** Offering training and professional development and support to educators, parents, and the school community to enhance skills and knowledge.
- **Regionalized Programs:** Coordinating and administering regionalized educational programs focusing on career technical education, alternative education, and special education.



SUPERINTENDENT'S MESSAGE



From the County Superintendent of Schools



John A. Carroff

The Marin County Office of Education (MCOE) is dedicated to achieving equitable learning experiences and outcomes for all students. As a support organization, we work in concert with our school districts, governmental agencies, businesses and non-profit partners in service of that objective. Everything we do is in response to the question, “what is best for children?”

While Marin County can boast some of the top performing schools in the state and can point to high test scores, graduation, and college acceptance rates, we continue to live with a persistent problem: Students from historically underserved communities underperform compared to their more affluent peers. To be blunt, race is still a reliable predictor of success in Marin’s schools. At MCOE, we believe that can change, and the day will come when race and socioeconomic level is no longer correlated to student achievement.

That belief is important, but it is not enough. In addition to the other top-notch support MCOE provides for your local school districts, we will be applying additional focus, resources and support in three areas we think will create the greatest leverage in our efforts toward educational equity.

Research tells us that when children attend **high-quality preschool**, can **read at grade level by third grade** and can identify and pursue **a viable career pathway including post-high school education** like college or career training, their odds of success in school and in life improve dramatically. These leverage points can have an outsized positive effect for students of color.

Our early efforts in these areas include expansion of MCOE's Early Childhood Education (ECE) office, enhanced partnerships with providers and schools and a variety of other technical and financial supports. This summer, MCOE has provided two days of science-based literacy training (including phonics) for elementary teachers from every Marin school district. We will continue to lead the way in improving literacy instruction into the 2023-24 school year. Our College and Career Readiness Office has grown to provide several essential supports for our schools to offer a wide variety of career education classes and pathways including building trades, medical assisting, automotive and education. We are thrilled to be part of the team breaking ground in August for a new Career Technical Education Center on the Terra Linda High School campus that can be accessed by all of Marin's high school students.

The Marin County Office of Education houses several departments that provide essential services to districts, schools, students and families. Our Business Department ensures the financial stability of all our school districts and provides direct support whenever it is needed. Our Health, Safety and Support Department sets the stage for consistent, research-based crisis response across Marin County. Our Technology Department serves as a critical hub for districts and schools across the county. Our Human Resources department ensures appropriate teacher credentialing and helps to hire and manage substitute teachers. The outdoor education program at MCOE's Walker Creek Ranch provides students with unforgettable hands-on learning experiences. Our Special Education and Alternative Education staff work directly with students who need specialized support and instruction.

There is so much more to share, and I hope this Annual Report creates a vivid picture of MCOE's services and gives you an appreciation for the wonderful people, many of whom work behind the scenes, to do what's best for ALL of Marin's children

BOARD OF EDUCATION



Marin County Board of Education



The Marin County Board of Education is a seven member governing body primarily responsible for:

- Adopting policies governing the operation of the Board;
- Serving as the appeals Board for interdistrict transfers;
- Serving as the appeals Board for student expulsions;
- Serving as the appeals Board for charter school petitions;
- Adopting the County Office of Education Local Control and Accountability Plan and budget; and
- Establishing the salary for the County Superintendent of Schools.

Li Delpan

Area 1

Patricia Garbarino

Area 2

Greg Knell

Area 3

Fel Agrelius

Area 4

Marilyn Nemzer

Area 5

Dr. Curtis Robinson

Area 6

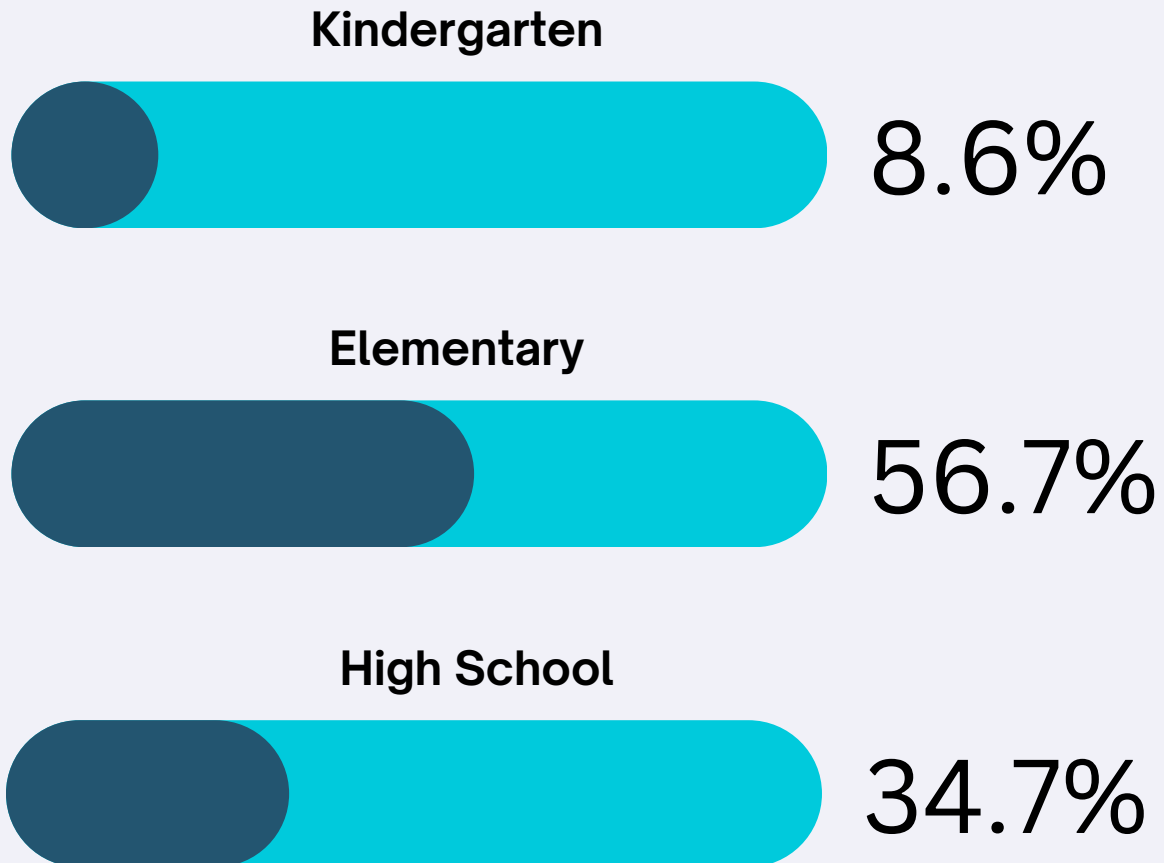
Clairette Wilson

Area 7

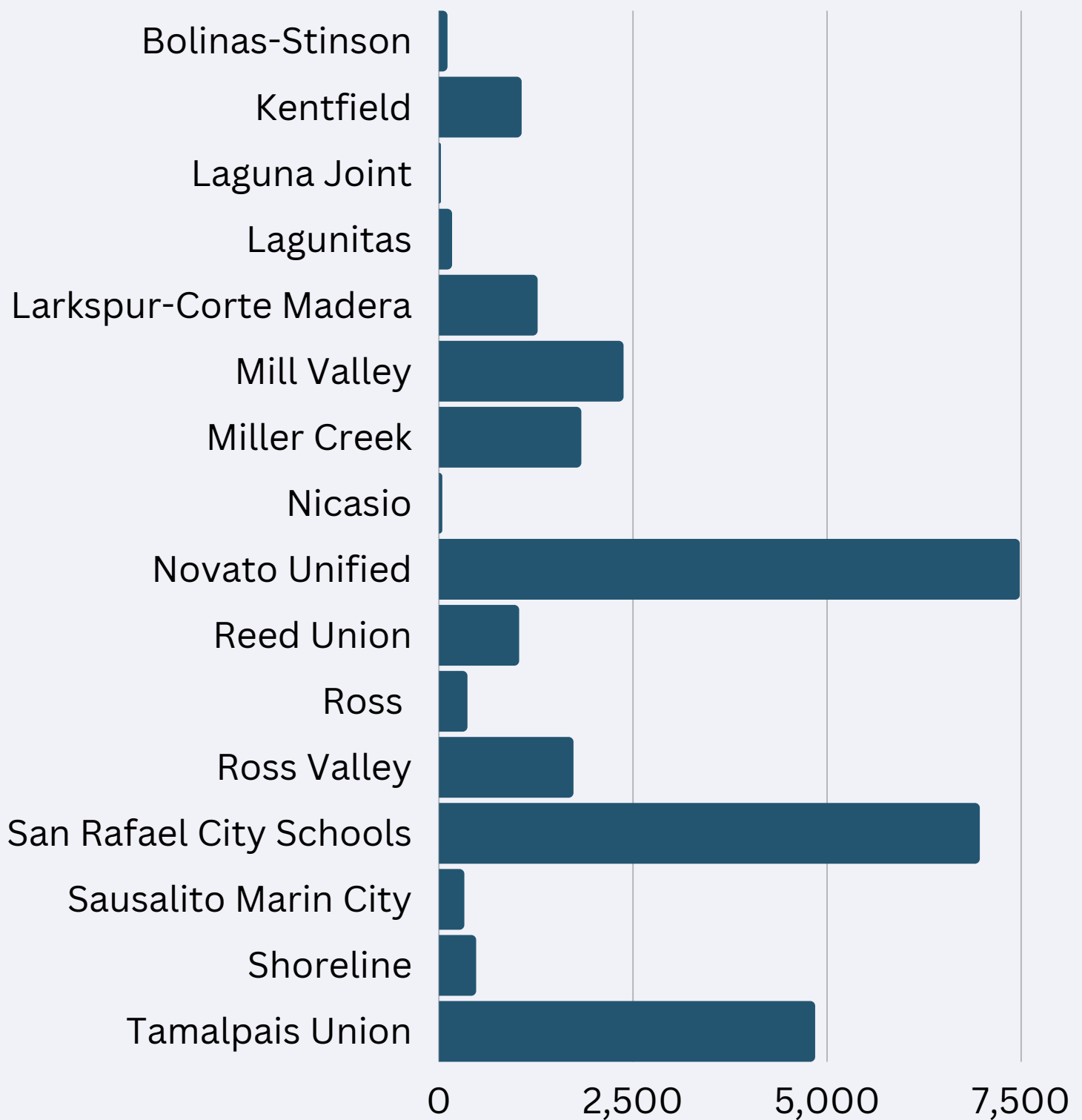


Marin County Board of Education Member Areas

30,483 Students 17 School Districts



Marin County Schools: By the Numbers

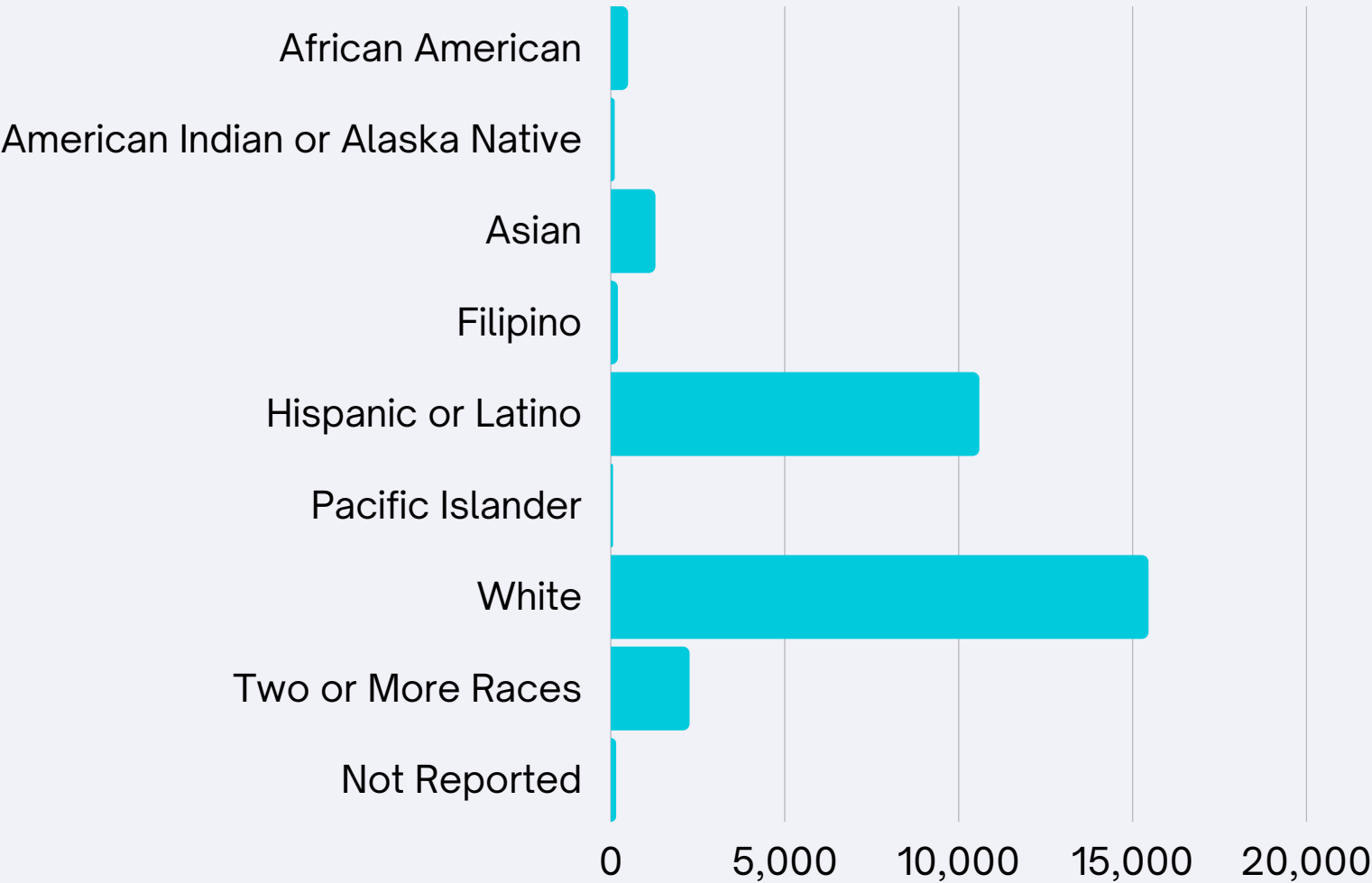


Total Students: 30,483

Marin County District Enrollment

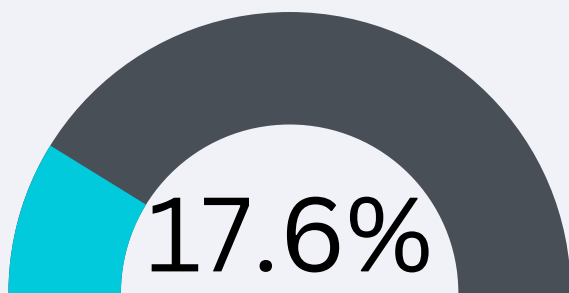
Source: DataQuest, California Department of Education

Marin County Student Demographics

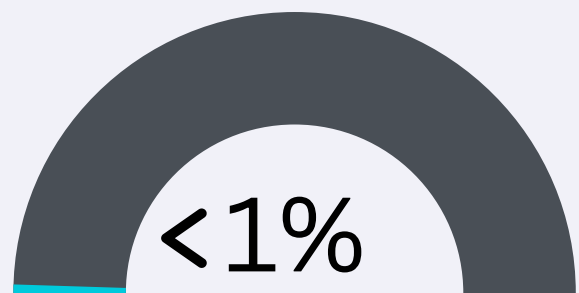


Total Students: 30,483

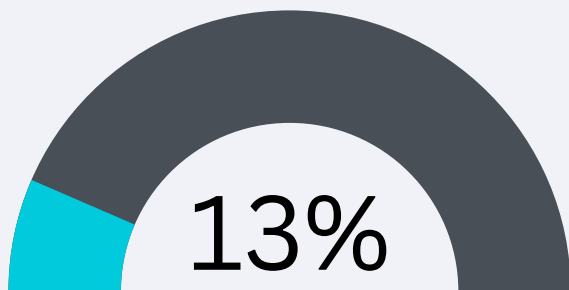
Source: DataQuest, California Department of Education



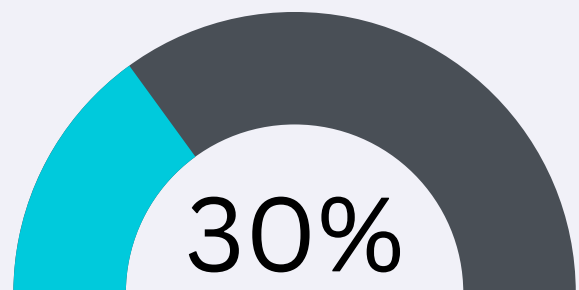
English Learners



Foster Youth



Special Education

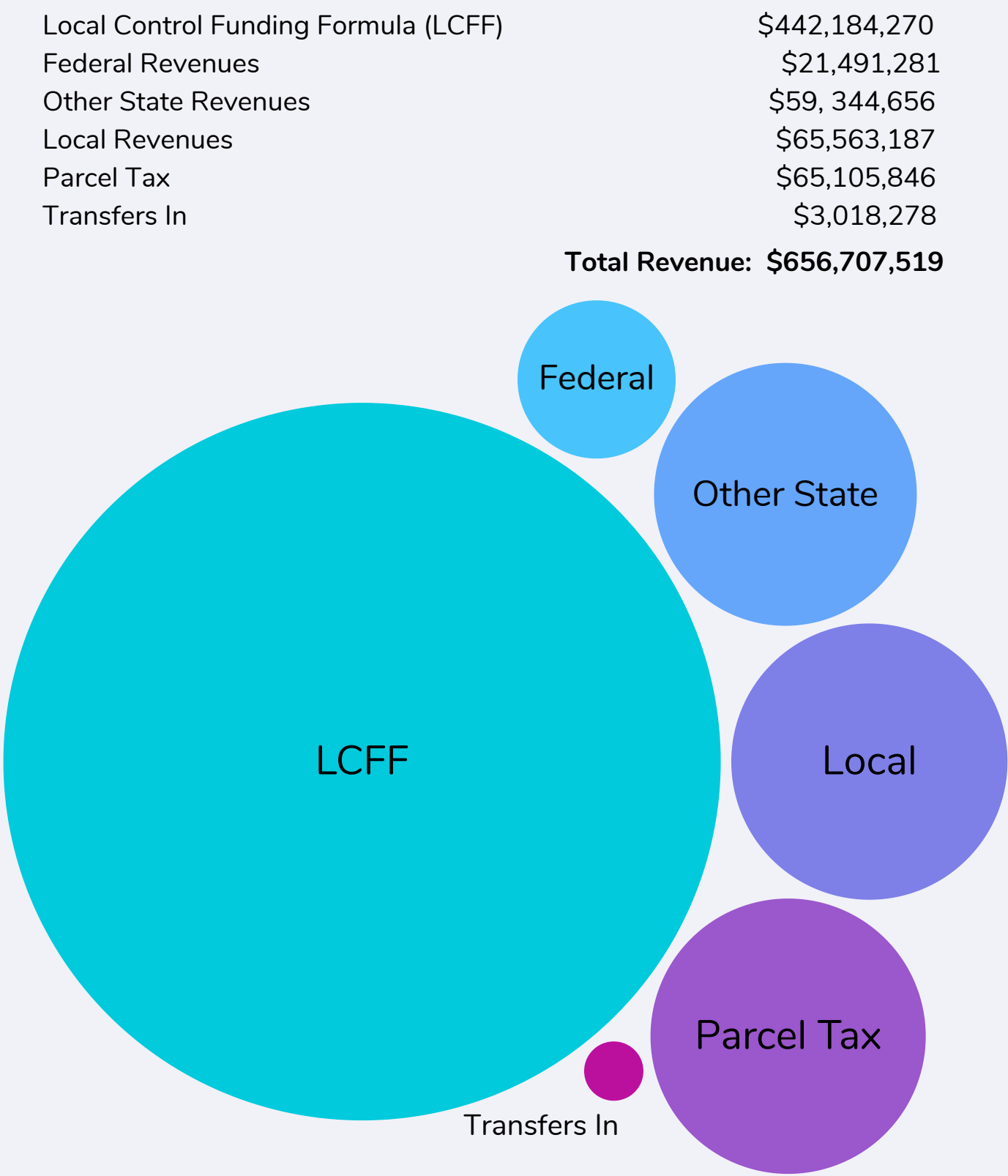


**Free & Reduced
Price Meals**

Total Students: 30,483

Marin County Student Profile

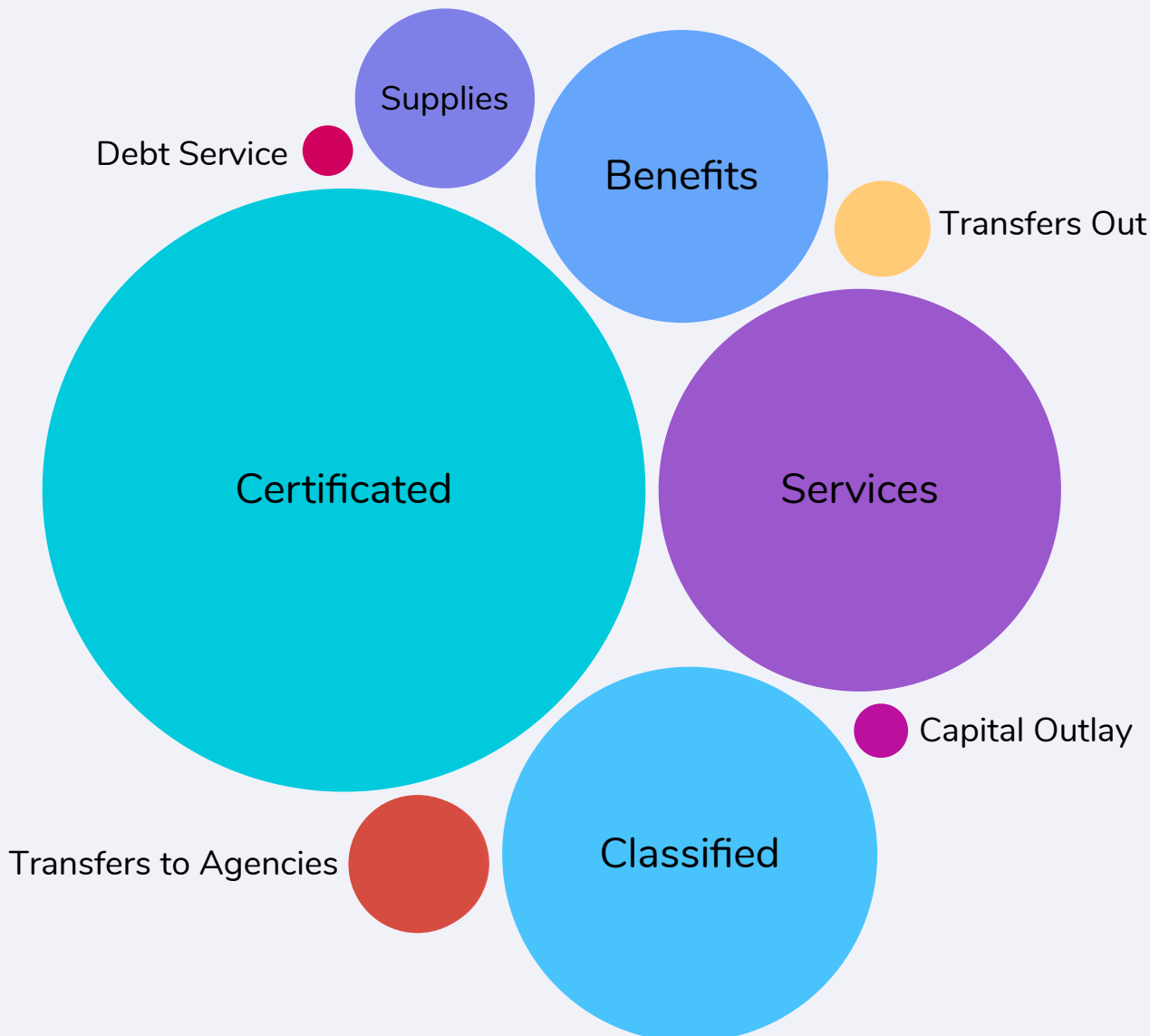
Marin County PK-12 Revenue Across all School Districts



Marin County PK-12 Expenditures Across all School Districts

Certificated	\$251,715,126
Classified	\$97,415,402
Benefits	\$165,074,262
Supplies	\$22,355,883
Services	\$112,117,868
Capital Outlay	\$2,029,805
Indirect Costs	(\$254,067)
Transfers Out	\$6,380,557
Debt Service	\$1,901,416
Transfers to Agencies	\$12,244,469

Total Expenditures: \$670,941,706



DIVERSITY AND BELONGING



The Journey Continues

For over 10 years, the Marin County Office of Education (MCOE) has actively worked to promote racial equity and inclusion and celebrate diversity. A California Department of Education antibias grant has been awarded to the MCOE to support the progress and enhancement of diversity, equity, inclusion, and belonging (DEIB) work over the next 3 1/2 years. The grant focuses on the following areas:

- Further developing and maintaining DEIB policies and practices at the MCOE and across Marin County districts;
- Establishing opportunities for staff to create a shared definition of DEIB, with focus on issues of race, class, gender, special education, immigration and language status;
- Developing an understanding of the “why” behind DEIB work in Marin; and
- Creating opportunities for discussions among peers regarding their own DEIB experiences so they can learn from each other.

Diversity, Equity, Inclusion, and Belonging Spotlight



Survey

MCOE Climate Survey was administered. It was designed to help gain a deeper understanding of perspectives and experiences related to DEIB within the workplace. Results will be analyzed by the UCLA Center for the Transformation of Schools and provided to MCOE in the Fall of 2023.



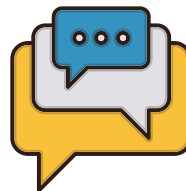
Partner

MCOE has partnered with Beyond Differences and Greg Morris Consulting, entities known for their work in the diversity, equity, inclusion, and belonging field, to review internal policies and procedures through a DEIB lens. Together, a DEIB Vision and a comprehensive Mitigation Plan will be developed.



Implement

Utilizing the MCOE Climate Survey and Departmental Landscape Analysis, professional development opportunities will be made available to all 300 staff. Additionally, the MCOE will review/modify/improve internal policies, practices, and procedures that align with the DEIB Vision and Mitigation Plan.



Engage

Through the continuation of the staff working groups (Staff Equity, Curriculum & Instruction, and Community Engagement), and the launch of MCOE's DEIB Advisory Council, the MCOE will engage the expertise of staff and expand the reach of DEIB efforts.

DEPARTMENT UPDATES



Alternative Education Program

The Alternative Education Program consists of four (4) educational programs that serve young people in a variety of pathways with the goal of ensuring that students have the knowledge, skills, and habits of mind necessary for success after graduation.

Marin's Community School: An alternative public school that deeply engages each student through personalized learning experiences in a collaborative and supportive environment. Serves students in grades 7th - 12th.

Phoenix Academy: A small, personalized charter school that is designed to engage and support students who need a different educational model. Operating in tandem with Marin's Community School, the program builds on students' assets and validates and affirms each student's identity to foster a sense of belonging.

Oracle Independent Study: An alternative to a traditional daily program, Oracle provides students with increased flexibility. Students meet one time per week with a credentialed teacher, and independently learn through a standards-based curriculum comparable to traditional school curricula.

Loma Alta School: The Marin County Office of Education Juvenile Court classroom provides daily instruction during the regular school year and a summer session for all detained youth in Marin County. Instruction in this self-contained classroom centers on the California Content Standards.

Department Spotlight



Diplomas

16 graduates last school year (an increase from 1 graduate six years ago).



Partnerships

\$1.5 million grant to strengthen Community School pillars in coordination with other Marin County school districts.



Summer School

17 students completed the new summer school program with a focus on Marin County geography, ecology and biology.



Technology

Virtual reality (VR) headsets allow students at Marin's Community School and Loma Alta School to engage in math, career information, and field trips in new and different ways.

Special Education Program

The Special Education Department operates regionalized special education classrooms and provides several itinerant special education services to help meet the educational needs of students with Individualized Education Programs (IEPs) on behalf of the school districts within Marin County.

In total the MCOE operates 35 regionalized special education classrooms and services on behalf of all of the school districts in Marin County. The special education programming is offered at 21 different school sites and serves close to 500 students.

Regionalized Program Operations

- Early Intervention: 11 classrooms
- Elementary: 15 classrooms
- Secondary: 5 classrooms
- Transition: 4 classrooms
- Itinerant Services:
 - Visual Impairment
 - Deaf and Hard of Hearing
 - Resource Specialist
 - Adaptive Physical Education (APE)

Department Spotlight



Life Skills

We partner with local businesses to enhance opportunities for students to gain valuable life skills outside of the walls of the classroom. Partnerships permit students to access the community and apply developing skills.



Expansion

Expanded the continuum of regionalized special education classrooms to include an additional early intervention preschool classroom located on a comprehensive school site.



Unified Sports

Our new APE teacher will be coordinating the expansion of Unified Sports to include elementary students in the collaborative sports program that benefits students in general education and special education.



Connection

Continuing to work with regionalized special education classroom host sites' administration to enhance and solidify the MCOE classroom's connection with the school campus and school community.

Early Childhood Education

With a vision of "co-creating early learning environments free from bias", the Early Childhood Education (ECE) Department works to increase sustainable high-quality early care and education for all children in Marin County. These efforts focus on the creation of developmentally appropriate early learning environments that utilize research-based instructional practices with an emphasis on relationships, anti-bias education, inclusive practices, and family engagement. The ECE Department provides professional development, coaching, technical assistance, professional growth advising, assessment and data services to educators and programs serving families with children birth through six years old to support this goal.

Marin Quality Counts: Leverages State, Federal, and local resources to promote excellence in early care and education for programs, providers and families. In addition to professional early learning support, such as coaching, professional learning and technical assistance, the work includes the Quality Rating and Improvement System (QRIS) which can be applied in ECE settings throughout Marin County.

Department Spotlight



Coaching

200 coaching visits provided in 34 early care in education classrooms. 170 early care in education staff and administrators attended the coaching sessions.



Resources

Developed a dedicated website to share resources with families, providers, teachers and administrators.



Awards

\$520,000 provided in academic awards, incentives, and mini grants to early childhood educators for achievement of specific goals towards college education, professional growth, and commitment to providing high quality learning environments for young children and families.



Skill Development

470 early childhood educators participated in ECE provided professional learning to support knowledge, implementation, and best practices.

College and Career Readiness

The College and Career Readiness Department provides leadership for developing and offering high-quality Career Technical Education (CTE) to Marin County students. Through the Marin County School to Career Partnership (STC), schools, businesses, and organizations collaborate to create exciting educational opportunities for students designed to explore and create career pathways.

School to Career Partnership: Brings together schools, businesses, and organizations to create exciting educational opportunities for students such as internships, job shadows, and career academies. The Partnership serves Marin County students from diverse academic, social, and economic backgrounds.

Regional Occupational Program: Closely collaborates with industry and businesses to teach, reinforce, and enrich core academic curricula by preparing students for gainful employment by providing real-world applications of skills that will connect students' present activities and future lives.

Career Technical Education: Partners with businesses to provide multiple pathways to a wide range of in-demand careers. Students engage in career exploration while learning a set of technical and employability skills that are integrated into their current academic studies.

Department Spotlight



Participation

1000+ students participated in College and Career Readiness (CCR) activities and completed internships.



Grant Awards

Over \$2 million in new CTE grant funding awarded to Marin County high schools under the leadership of MCOE in 2022-2023. "Exemplar" status given to our K12 Strong Workforce Program (K12 SWP) Round 5 application.



Development

Over \$1.5 million in grants and private donations raised to launch a new CTE Center at Terra Linda High school that will be open to all students in Marin County.



New Positions

The College and Career Readiness team is growing! We added three new positions and in 2022-2023.

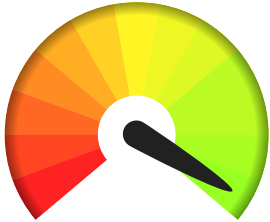
Health, Safety, and Support

The Health, Safety, and Support (HSS) Department is the newest department at the MCOE, made up of previously existing work split across a few departments. HSS is dedicated to supporting Marin County school districts, students, colleagues and families to maximize their wellness. This includes substance use prevention education, suicide prevention, intervention and postvention, crisis response, mental and behavioral health, and campus safety.

Wellness Collaborative: Meets monthly to share resources across school districts (e.g., parent trainings, professional development, etc.), discuss the application of wellness-centered curriculum, suicide prevention strategies, and support one another through collaboration to strengthen services to youth.

CalHOPE and SBHIP: Recently awarded grants designed to enhance existing mental health service delivery and provide the necessary infrastructure to maintain the provision of centralized mental health services in Marin County Schools.

Department Spotlight



Risk Assessment

Over 200 mental health providers across Marin County completed the evidence-based Suicide Risk Assessment and Intervention Training.



Education

Over 6000 students received substance use prevention education, with 625 boxes of Narcan distributed to 95 school sites.



Cohort 1

School Wellness Ambassador Program (SWAP) completed its first year with five (5) school districts participating in the program. Year two will introduce an additional five (5) school districts with the goal of all Marin County school districts participating in SWAP within three (3) years.



Partnership

Marin County School Law Enforcement Partnership convenes five times during the school year with representatives from school districts and law enforcement jurisdictions to support the safety and well-being of students and concerns that need to be addressed.

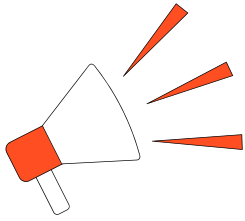
Personnel Services

Personnel Services supports approximately 275 permanent employees, over 139 substitutes, extra-hire staff and professional experts, and over 530 county wide substitute teachers. Support is provided through coordination and monitoring of employee benefits, workers' compensation and state disability claims.

Credentials Analyst: Serves as a liaison between the Marin county schools and the California Commission on Teacher Credentialing (CTC) and supports all teachers countywide with renewing or adding credentials and applying for documents.

Countywide Personnel: Connection and support is provided to Marin County school districts through the facilitation of monthly meetings with countywide school district Personnel staff. The meetings serve as a forum to discuss and analyze Personnel topics that are emerging, timely in nature, or of common interest across all school districts in Marin County.

Department Spotlight



Recruitment

Onboarded 302 new regular employees, extra hires, professional experts, and substitutes.



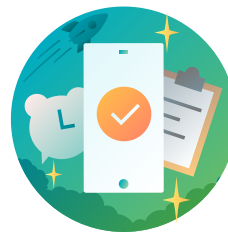
Support

Held 1,000 meetings with districts and educators to assist with credentialing and substitute teachers.



Compliance

Supported over 750 temporary County certificates and applications submitted to the California Commission on Teacher Credentialing.



Onboarding

Updating and modernizing employee handbooks and resources to ensure they are comprehensive, accessible, and reflect current practices.

Business Services

Business Services supports county office operations, Marin County school districts, two (2) charter schools, and one (1) joint powers authority (JPA). Business Services consists of four (4) core areas:

County Office Services: Provides budget and accounting services to the programs operated by the MCOE. This includes providing budget and grant management, preparing budget and financial reports, paying the MCOE bills and preparing the MCOE payroll.

District Services: Provides payroll and accounts payable support and assistance to Marin County school districts by processing payroll and vendor warrants, payroll taxes, and retirement benefits and performing all associated reporting.

AB 1200 Fiscal Oversight: Oversight reviews are performed four (4) times annually for Marin County school districts. AB1200 is designed as a progressive intervention process to prevent fiscal distress. Oversight staff carefully monitor each district's fiscal condition and provide support to districts when any distress is identified.

Enterprise Services: Provides interim and ongoing business services support for Marin county school districts on a fee for service basis. Additional staff have recently been added to support this growing area of need within the county. In addition, this team supports the business needs for the Marin County Special Education Local Plan Area (SELPA).

Department Spotlight



Budget Management

In collaboration with MCOE departments, supports, manages, and oversees a \$55.5 million dollar annual budget.



Support

Supports 17 school districts and 2 charter schools through fiscal oversight reviews of the adopted budget, two budget updates and the annual financial statements, monthly meetings, regular workshops and information updates.



Processing

Review and process retirement reporting and payroll checks and warrants for Marin County school districts on a monthly basis.



Contracted Services

Provides full business office services for two (2) rural Marin County school districts and provides additional fiscal support services for school districts upon request.

Information Services

Information Services is responsible for providing business and data processing services to the MCOE and all school districts with Marin County. This includes support of payroll and fiscal inventory software for participating school districts. Information Services also operates the electronic mail systems, internet services, Help Desk, and the internal MCOE local area network. The internet network that is managed is expansive and consists of ATT telecommunications services, Comcast services and all associated equipment.

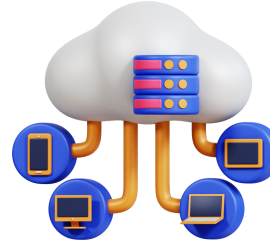
Countywide Technology Committee: Connection and support is provided to Marin County school districts through the facilitation of monthly meetings with countywide school district technology leaders. The meetings serve as a forum to collaborate and share information regarding the use of technology in their districts.

Department Spotlight



Online Forms

Digitizing and developing online systems to support new employee onboarding.



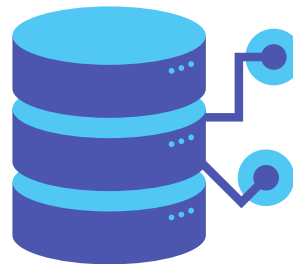
Web Services

Transitioning existing on-site MCOE file systems to Microsoft cloud-based services.



Support

Providing high level, rapid response support for the information technology (IT) needs of MCOE and school district staff.



Hosting

Serves as the host for the current countywide financial system and online staff portals.

Education Services

Education Services supports Marin County school districts in the areas of professional learning, community engagement, and accountability.

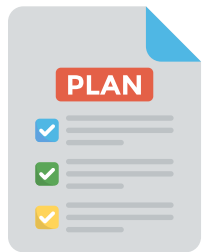
Direct support is provided through programs, services, and activities.

During the 2023–2024 school year, the Education Services team will host a professional learning series for TK–12 public school educators to build capacity in the areas of research and instructional practices related to the science of literacy to support the improvement of student literacy countywide. The department also facilitates a variety of networks such as:

Innovative Learning Team: District instruction and curriculum administrators that meets monthly to discuss a host of current issues including, but not limited to, assessment, teaching, and learning initiatives. Equity is at the forefront of all planning.

Marin School Principal Network: Connection and support is provided to Marin County school districts through the facilitation of monthly meetings with countywide elementary and high school principals. The meetings serve as a forum to improve teaching and learning through increased collaboration, resource sharing, and distributive leadership.

Department Spotlight



Consultation

Provided 500 hours of direct support to school districts for the purpose of updating their school plans for equity in supporting student learning while ensuring the plans aligned with state and federal reporting requirements.



Support

Implementing continuous improvement efforts in Marin schools and school districts as a means of building district capacity to meet the needs of all learners.



Competition

In partnership with our public, private and parochial schools, facilitated Mathletes competitions, the 34th annual Mock Trial competition, countywide cross country and track and field meets for over 1800 Marin County students.



Learning

Provided professional development opportunities to over 2,000 public, private, and parochial educators and families connected to racial equity, legal updates, trauma informed practices, literacy, mathematics, scientific inquiry, and diversity, equity, inclusion and belonging.

Maintenance and Operations

The Maintenance and Operations (M&O) Department supports all MCOE classrooms and MCOE programs operating at locations owned or rented by the MCOE. The M&O team works to ensure that the five MCOE campuses and main office are clean, maintained, and secure.

Other M&O activities include:

Fire Mitigation: Proactive actions taken before a wildfire ignites to reduce the severity and negative impacts on the school and community through the use of defensible space.

M&O Director Meetings: Connection and support is provided to Marin County school districts through the facilitation of monthly meetings with countywide school district Maintenance and Operations staff. The meetings serve as a forum to discuss best practices and share resources to support maintenance and safety across all school sites and school districts in Marin County.

Department Spotlight



Work Orders

739 Work Orders received, processed, and completed.



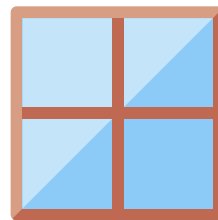
Meetings

Supported 1,465 in-person meetings/events.



Roofing

Maintenance and repair of the Marindale roof will take place during the 2023-2024 school year. This project will increase energy efficiency and the durability of the property.



Windows

Work is underway to replace all of the exterior windows of the MCOE main office to facilitate energy efficiency, sound dampening, and visibility.

Walker Creek Ranch

Walker Creek Ranch began operating as an Outdoor Education and Conference Center in April 1990. The Ranch was shuttered during the COVID-19 pandemic and recently resumed operations under a pilot program. Walker Creek Ranch will resume normal operations during the 2023-2024 school year. The Ranch, located in West Marin, encompasses 1,741 acres with extensive hiking trails, a one-acre pond, and numerous buildings.

Outdoor Education: The Marin County Outdoor School at Walker Creek Ranch is dedicated to helping elementary schools satisfy their educational goals through quality instruction within a special learning environment that inspires and motivates students to achieve an appreciation of the natural world. Using the principals of thematic instruction, the Outdoor School program enhances a student's critical thinking, processing, and socialization skills.

Conference Center: Offers facilities and services to client groups for weddings or special events. Participants leave Walker Creek Ranch with a renewed sense of community and connection to nature.

Department Spotlight



Outdoor Education

Over 2,200 students and 45 schools were served during the Spring 2023 pilot OE season.



Conference Center

Over 2,000 guests and 36 conference groups were served during 2022-23 pilot conference season.



23-24 Operations

2023-24 Outdoor Education enrollment is underway, and over 4,000 students are already signed up to attend. We anticipate these numbers to grow.



Advancements

WCR continues to focus on facility and land management improvements and projects. These include, but are not limited to, ongoing distaff thistle abatement, protection of wildlife habitat, gutter and roof work, and a new commercial hot water heater for the kitchen.

Marin County SELPA

The Marin County Special Education Local Plan Area (SELPA) works collaboratively with school districts and public agencies within Marin County to make available a full continuum of special education support and services. Direct and indirect support is provided to Marin County school districts regarding fiscal, legal and compliance issues related to the provision of special education services. The SELPA operates through four (4) Committees.

Operational Steering Committee: Comprised of representative school district Superintendents. Acts as the governing body of the SELPA.

Advisory Steering Committee: Comprised of countywide school district Special Education Directors with a focus on programmatic needs related to special education service delivery.

Business Advisory Committee: Comprised of countywide school district Business Official staff with a focus on fiscal needs related to special education service delivery.

Special Education Advisory Committee: Comprised of countywide parents, staff and other parties interested in the delivery of special education services and informing the development of the Local Plan.

Department Spotlight



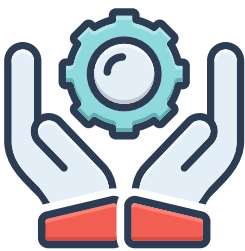
Students Served

Currently, 3,973 students in Marin County receive special education services.



Support

Provision of targeted technical assistance and guidance provided to school districts in the areas of compliance and the improvement of outcomes for students with Individualized Education Programs (IEPs).



Inclusion

In collaboration with the California Department of Education Special Education Division, supporting Marin County school districts to enhance and intensify inclusive practices within early childhood education programs.



Analysis

Facilitation of committee(s) to conduct reviews of Marin County SELPA Fiscal Allocation Plans, Excess Costs, and Set-Asides to ensure appropriate allocation of resources to schools districts for special education programs and services in Marin County.

California Collaborative for Educational Excellence

The California Collaborative for Educational Excellence (CCEE) was established in 2013 by the California State Legislature and Governor to provide a variety of resources and support to school districts, county offices of education, and charter schools to provide a quality and equitable education for every student. As the Administrative Agent for the CCEE, the Marin County Office of Education is an integral part of this statewide agency and its three Centers for Educational Excellence.

Center for Teaching, Learning, and Leading: This Center builds capacity and support for Local Educational Agencies (LEA) currently receiving and in need of direct technical assistance.

Center for Innovation, Instruction, and Impact: This Center implements a statewide approach to improving LEA capacity by collaborating on, developing, delivering, sharing, and spotlighting research-based practices that demonstrate the power to improve outcomes.

Center for Transformative Systems: This Center facilitates the development of a shared vision for implementation of the Statewide System of Support (SSOS) that coordinates action resulting in equitable educational outcomes.

Department Spotlight



Staffing

Budget: \$32.7 Million

Staffing:

35 CCEE Full-time

12 CCEE Part-time

7 CCEE Administrative Agent



Partnerships

475+ Partnerships with Statewide Agencies, Advocacy Groups, Membership Organizations, Non-profits, and LEAs.



Impact

- 5,920 Indirect Support Impact (guidance, access to online content, etc.);
- 385 Direct Support Impact (personalized training, direct technical assistance, etc.);
- 676 Strategic Engagement Opportunities; and
- 525 Resources Created



Initiatives

2023-2024 Initiatives:

- Statewide System of Support;
- Community Engagement;
- Learning Acceleration; and
- 21st Century California School Leadership Academy

COUNTYWIDE WELLNESS WORK



Wellness Activities

The MCOE believes that wellness serves as the foundation for children and young adults to develop knowledge, understanding, and skills to support their emotional, social, and physical well-being. Using a unified and collaborative approach to the implementation of wellness activities across all Marin County school districts helps to ensure that all students have access to resources, support, and programming. Countywide wellness work places a strong focus on prevention and the importance of healthy and safe school environments that foster positive connections and strengthen resilience.

Programming: Providing training, materials, and support for the implementation of social emotional curriculum, trauma informed practices, and tiered levels of interventions across all Marin County school districts.

Crisis Response: Using a countywide adopted protocol as the foundation, coordinated service delivery to support school districts during times of crisis. Support is provided in the areas of planning, communications, service delivery, and risk assessment.

Programming Spotlight



Suicide Prevention

All school districts in Marin County have access to four (4) MCOE and [BHRS](#) hosted trainings designed to support suicide prevention.



Threat Determination

Development of a countywide protocol to support school districts with threat prevention within the school community.



Parent/Caregiver Information Series

Trainings provided to Marin County parents and caregivers on topics such as the unique mental health needs of LGBTQ+ youth, navigating youth anxiety, and the development of healthy coping skills in youth.

GRANT HIGHLIGHTS



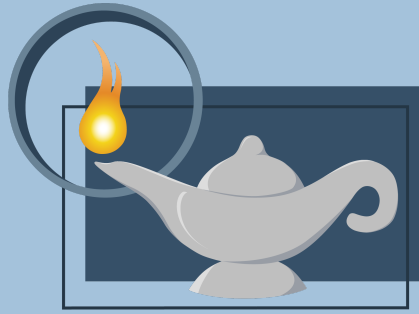
Award Overview

Grant funding for the 2023-2024 school year equals \$17,730,002. This represents 38% of the general fund revenue. A total of 44 grants were awarded. Education Services, Special Education Program, Alternative Education Program, College and Career Readiness and Health, Safety and Support were all awarded grants to support department operations.

Diversified Revenue Portfolio: A purposeful effort, beginning in 2015, to mitigate the impact of anticipated flat funding through the pursuit of grants. Over time, these additional funding sources have permitted departments and services to expand into new areas of service delivery and support to school districts.

Grant Funding: 2023-2024

Department	Grant Area(s)	Award
Education Services	Professional Development, Curriculum and Instruction, Program Development, Foster Youth	\$3,320,213
Special Education Program	Professional Development, Specialized Service Delivery, Dispute Resolution	\$10,588,999
Alternative Education Program	Specialized Service Delivery	\$751,846
College and Career Readiness	Program Development	\$2,155,380
Health, Safety, and Support	Professional Development, Technical Assistance, Program Development	\$733,564



MARIN COUNTY

OFFICE OF EDUCATION

Marin County Superintendent of Schools
John Carroll

Marin County Board of Education
Fel Agrelius
Patricia Garbarino
Greg Knell
Marilyn Nemzer
Curtis Robinson
Clairette Wilson

Contact Us

Marin County Office of Education
1111 Las Gallinas Ave, San Rafael, CA 94913
415 472-4110

www.marinschools.org 
superintendent@marinschools.org 
[@marinCOE](#) 